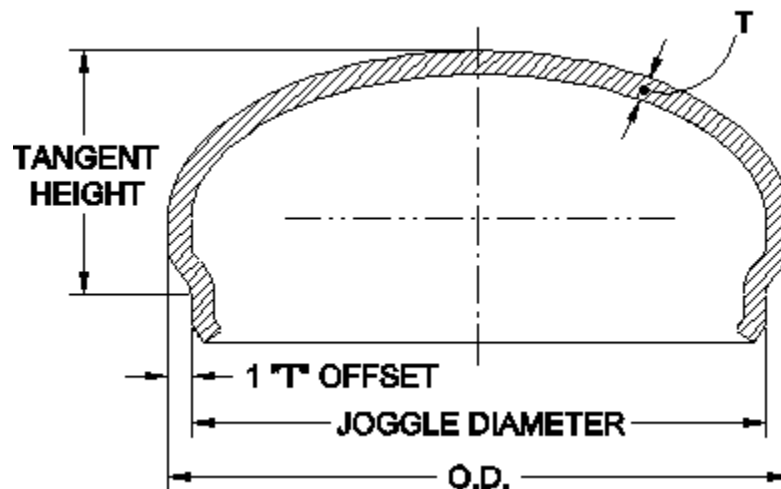




To return to Commercial Metal Forming website home page [click here](#)

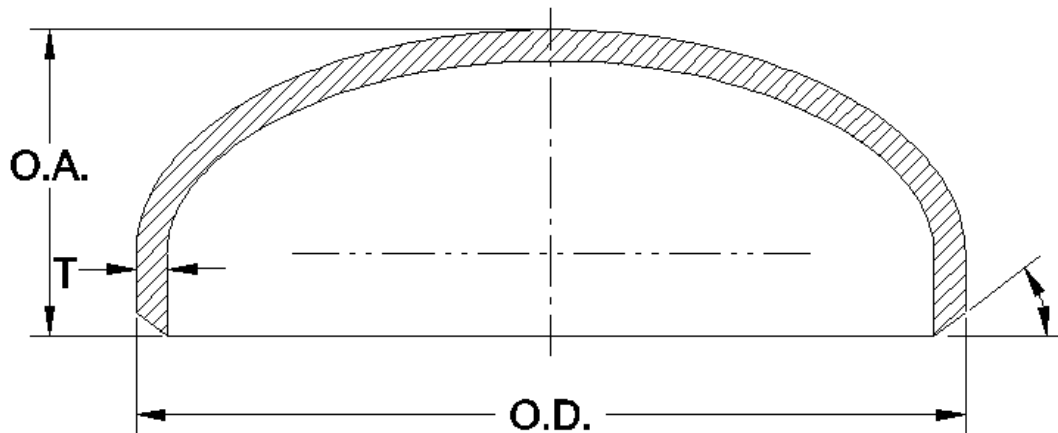
Joggled Heads

Joggled heads are used to improve the assembly of the head into the tank shell. The end of the flange of the head is offset to allow the head to easily fit into the tank shell. The standard offset is $1T$ (T = thickness), but it can be adjusted to other offsets based on customer requirements. The tangent height regulates how much of the head is inserted into the shell, thus determining the over all length of the tank. Before ordering joggled heads, make sure that the offset and tangent height meets your specific requirements. Joggled heads can be manufactured at our Ohio and California plants. **In addition, a wide variety of shapes and sizes are stocked at our 4 conveniently located distribution centers.** [Click here](#) to view the list of stocked joggled heads.



Beveled Heads

Beveled heads are used to improve the welding condition of the head to the tank shell. The flange of the head is machined, burned, or nibbled to the required dimension. The standard bevel is a 37 degree outside bevel. Additional configurations including inside, outside with land, double bevel, and others are available upon request. Before ordering beveled heads, make sure that the bevel configuration meets your specific requirements. Beveling can be done at all 3 of our manufacturing plants. **In addition, a wide variety of beveled heads are stocked at our 4 conveniently located distribution centers.** [Click here](#) to view the list of stocked beveled heads.



Contact us today and discover why we are recognized as an industry leader in product quality and customer service.

OHIO

Ph. (800) 826-5363

Ph. (800) 826-5867

Fx. (330) 740-8599

TEXAS

Ph. (800) 433-7040

Fx. (817) 232-0213

CALIFORNIA

Ph. (800) 854-3307

Fx. (714) 532-4126